



Aluminium systems

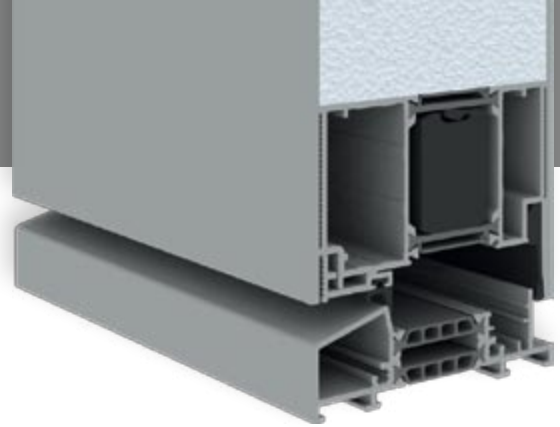
Star - panel door



🇬🇧 Modern architecture poses complex visual and technical challenges to the manufacturers.







Aluminium windows are dedicated for people who value slim, modern look.


Aluminium is an extremely durable material - it does not crack, bend or decolorize; it requires virtually no maintenance, even when exposed to serious weather conditions.




Star - panel door

 TECHNICAL DATA

	<i>Glass package availability</i>	<i>22 - 83mm for insert panel and 90mm for double-sided attachment panel. Glass package may be modified.</i>
	<i>Air permeability</i>	<i>Class 4</i>
	<i>Watertightness</i>	<i>Class 7A</i>
	<i>Wind load</i>	<i>Class E2400</i>
	<i>Fittings</i>	<i>Dr Hahn (concealed); Wala WR (roller); Wala WX (standard)</i>
	<i>Surface treatment</i>	<i>Available colors: RAL, structural ST and IGP colors, woodgrain, anodized.</i>
	<i>Overall thickness</i>	<i>90 mm</i>

 DIMENSIONAL RANGE

 Hinge type	<i>Max frame width</i>	<i>Max frame height</i>
Standard	1400	3000
Concealed	1400	2700
Roller	1400	3000

